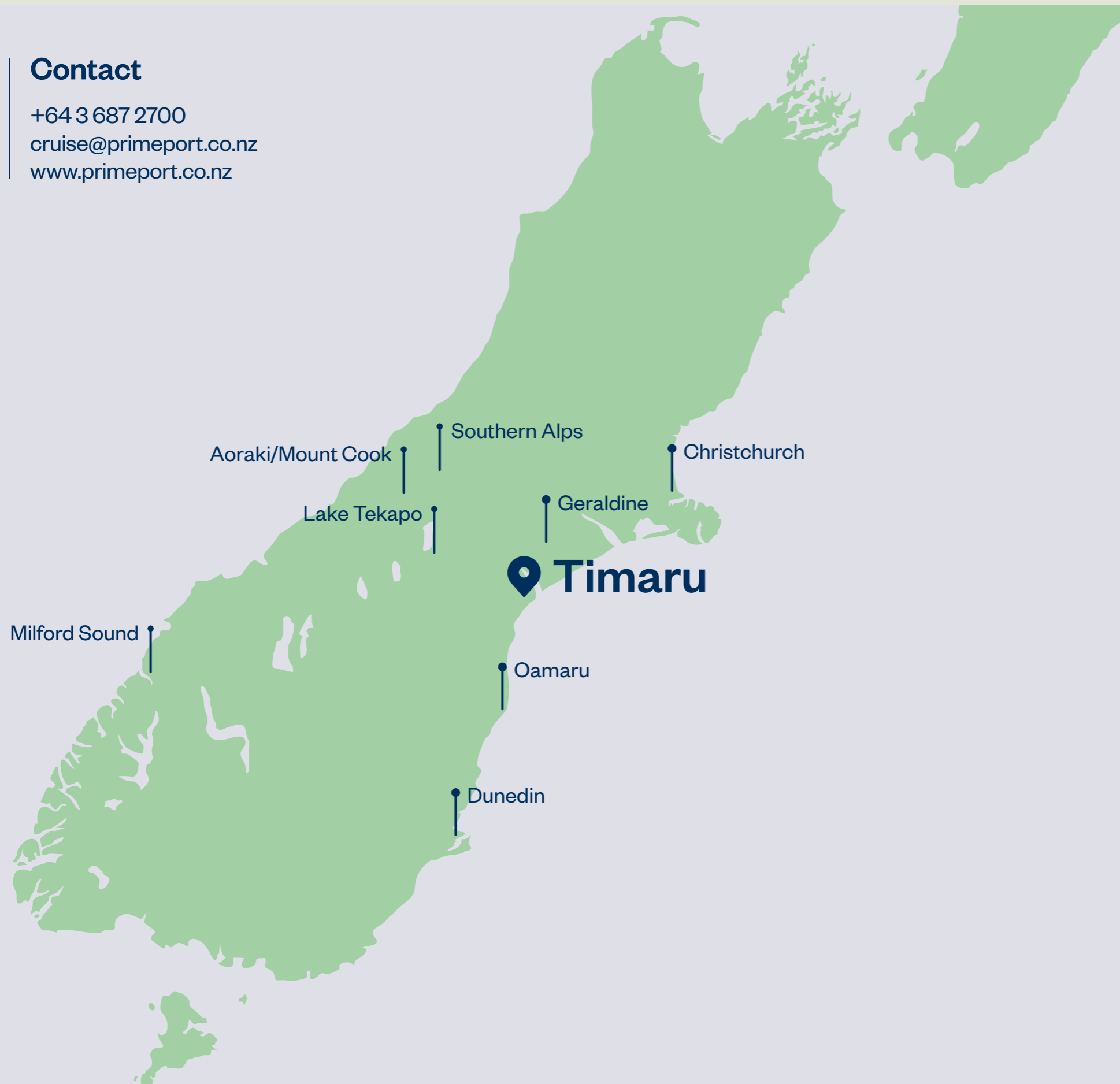


# New Zealand's Central South Island Cruise into Timaru



## Contact

+64 3 687 2700  
 cruise@primeport.co.nz  
 www.primoport.co.nz



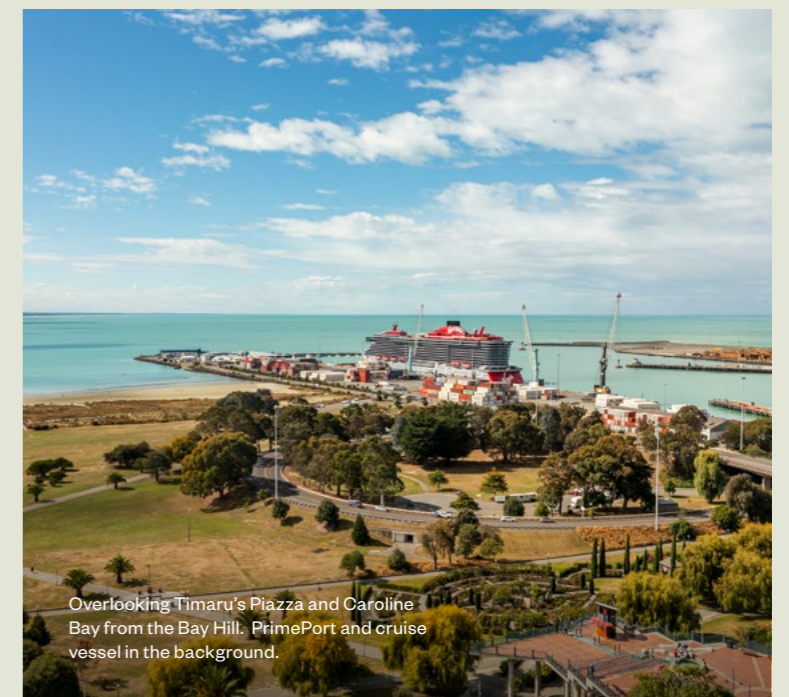
# Intro

The Timaru District is centrally located on the East Coast of the South Island. There is so much to see and do here, and it is the closest port to New Zealand's highest mountain, Aoraki/Mt Cook.

PrimePort Timaru is conveniently located near the heart of Timaru City, where you can walk straight off the ship and start exploring. It's a short walking distance to our town centre, restaurants and shops, or visitors can enjoy exploring the picturesque Caroline Bay reserve area, including the world famous Trevor Griffiths Rose Garden, finishing with a tasty beverage at one of the many hospitality establishments in the town.

On cruise days a bus shuttle service operates from the port to Heritage Place in the CBD, where the Visitor Information Centre is located.

Excursions to the wider region offer visitors the opportunity to discover our majestic hinterland – the alpine village of Lake Tekapo, set on the shores of an impressive alpine lake or Mesopotamia, where the braided river bed leads to the valley surrounded by the magnificent southern alps. The boutique village of Geraldine is 40 minutes drive from the CBD and offers an array of museums, art galleries and food and beverage tastings. One hour drive south is the historic Victorian town of Oamaru, and the impressive huge spherical Moeraki Boulders are a short 30 minute trip from the town.



Overlooking Timaru's Piazza and Caroline Bay from the Bay Hill. PrimePort and cruise vessel in the background.



Cruise vessel entering the harbour channel with tugs in position. Caroline Bay, Timaru City and South Canterbury hinterland in the background.

# PrimePort On Timaru's Doorstep

**Servicing the  
region for over  
140 years**





Established in 1878, PrimePort stands as one of New Zealand's rare man-made ports. Situated in Timaru, South Canterbury, it enjoys a strategic location just 1 km from State Highway One and a mere 800 m from the central business district. The harbour entrance coordinates are at Latitude 44°23' S and Longitude 171°16' E.

With five wharves and nine berths, PrimePort infrastructure is tailored to accommodate the diverse demands of import and export trades, particularly those tied to the region's primary industries. By providing reliable and efficient port services, PrimePort plays a pivotal role in connecting the region to the world. The growing interest of the cruise industry in Timaru has led to a threefold rise in visits compared to pre-COVID seasons.

Over the past few years, PrimePort has dedicated nearly \$90 million to upgrading and replacing infrastructure and floating plant. The two cruise berths now feature new reinforced concrete decks and rated wharf edge bollards for enhanced safety. Additionally, flush-mounted storm bollards have been positioned at each berth to protect ships during periods of high winds. Furthermore, PrimePort has expanded its tug capacity and capabilities by acquiring two new tugs within the last six years, further solidifying its commitment to providing top-notch maritime services.

# Key Locations

## Distances from wharves

	Number One Wharf	North Mole Wharf
 Information Centre	700m	2.0 km
 Beach	1.3 km	800 m
 Food and Hospitality	1.0 km	1.5 km
 Shops	1.0 km	1.6 km



# Number One Wharf

With a length of 290 metres and a berth pocket depth reaching 10.2 metres, Number One Wharf serves as the top choice for cruise ships measuring under 250 metres in length.

## Wharf Overview

290 metres long	15 x 90-tonne SWL flush-mounted storm bollards
10.2 metres deep berth pocket	300mm reinforced concrete deck
Substantial rebuild completed 2019.	



Cruise vessel on Number One Wharf.

# Number One Wharf

In 2019, Number One Wharf underwent a significant upgrade, which included pile, bearer and wharf edge bollard replacements along with the installation of a new 300mm reinforced concrete deck. To ensure enhanced mooring security during high wind events, the wharf now features fifteen 90-tonne SWL flush-mounted storm bollards,

strategically positioned for the safe mooring of cruise vessels. Additionally, the wharf's strategic location offers convenience, with a short 10 minute walk to the town and information centre via a pedestrian overbridge, providing visitors easy access to local amenities and attractions.



Cruise vessel in the turning basin, positioning for Number One Wharf. Tugs Titan and Hinewai in position.



Cruise vessel on Number One Wharf. Passenger pedestrian walkway and protection from mooring line exposure.



PrimePort staff welcoming and guiding cruise passengers on Number One Wharf.



Cruise vessel on Number One wharf with mooring lines attached to 90 tonne SWL flush-mounted bollards.

# North Mole Wharf

North Mole Wharf, stretching 465 metres in length with a berth pocket depth of 11 metres, serves as the designated berth for cruise ships **exceeding 250 metres in length.**

## Wharf Overview

465 metres long	8 x 100 tonne SWL flush mount storm bollards
11 metres deep berth pocket	330mm reinforced concrete deck
Substantial rebuild completed 2023.	



Cruise vessel on North Mole Wharf with PrimePort staff connecting mooring lines to 100 tonne SWL flush-mounted bollards.



PrimePort moorings staff member on North Mole Wharf.



Cruise Vessel on North Mole Wharf.

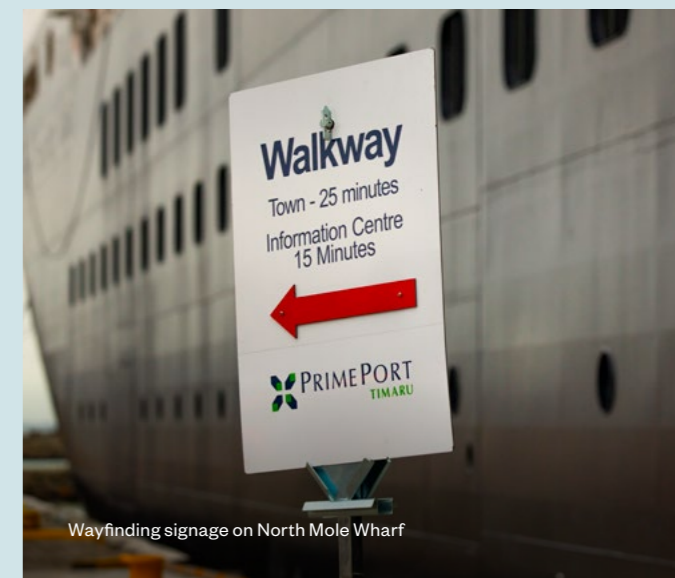
## North Mole Wharf

From 2020 to 2023, North Mole Wharf underwent a significant upgrade similar to that of the Number One Wharf, but included a more robust upgrade of the piles, bearers, wharf edge bollards and the addition of a 330mm reinforced concrete deck. The rebuild of the pavement behind the wharf and the inclusion of eight 100t storm bollards rounds off the safety improvements to

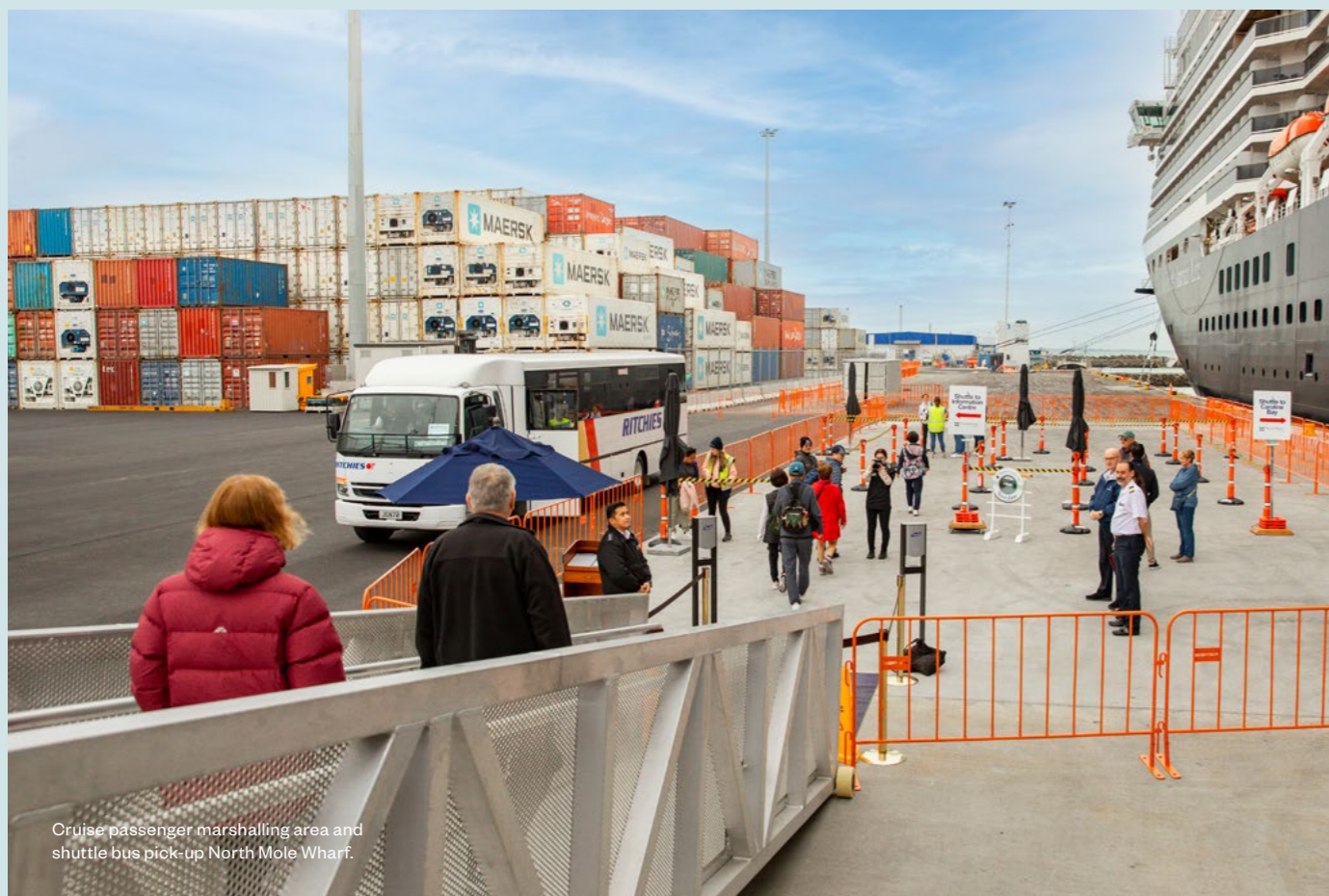
ensure enhanced passenger experience and mooring security during high wind events. Offering convenience, North Mole Wharf provides a comfortable 10 minute walk to Caroline Bay via Marine Parade, or visitors can opt for a 25-minute stroll into town and the information centre via the Loop Road footpath, perfect for stretching the legs while exploring the local surroundings.



PrimePort staff welcoming and guiding cruise passengers on North Mole Wharf.



Wayfinding signage on North Mole Wharf



Cruise passenger marshalling area and shuttle bus pick-up North Mole Wharf.



Shore excursion buses on North Mole Wharf.



# Port Services

## Pilot Launch

The pilot launch **Kiwa (2017)** is a 15.6-metre vessel constructed of fiberglass composite, crafted by Hart Marine in Melbourne, Australia.

The Kiwa was selected primarily for its advanced safety features, notably its self-righting capability in the event of a capsize. Equipped with a FLIR thermal imaging

camera, Kiwa ensures enhanced navigation capabilities. With a service speed of 22 knots, Kiwa efficiently fulfills its role in facilitating safe and seamless pilot operations.



Pilot Launch Kiwa.



## Three Tugs

As per Harbourmaster regulations, the presence of tugs is mandatory for all cruise ship arrivals and departures at PrimePort. To ensure safe escorting of cruise ships, PrimePort maintains three Azimuth Stern Drive (ASD) tugs at the ready.

Among these, the preferred choices for cruise ship operations are the **Hinewai (2017)** and **Titan (2021)** tugs. These two vessels are closely alike, both with a bollard pull rating

of 60 tonnes. Additionally, the reliable fleet veteran, **Tug Te Maru (1984)**, with a bollard pull of 32 tonnes, plays a crucial role in ensuring smooth maritime operations.

Tug Hinewai

# Timaru and South Canterbury





Caroline Bay Timaru.

# Timaru

Timaru is a vibrant coastal town with a population of 48,000 that is nestled in the heart of South Canterbury, New Zealand. The area offers a rich maritime heritage, stunning natural landscapes, and friendly local community. With its unique blend of history, culture, and modern amenities Timaru gives travellers plenty of opportunities to explore.

Discover historic sites, indulge in local cuisine, or simply enjoying the tranquillity of the coastal vistas. Timaru has something for everyone.



PrimePort staff member welcoming cruise passengers.



Timaru Town Centre.



Timaru's Piazza.



Trevor Griffiths Rose Garden.



Cruise passengers in Timaru's Town Centre.

## Discover Timaru

**Website:**  
welovetimaru.nz

**On Socials:**  
welovetimaru

Te Ana Māori Rock Art Centre	Street Art
Trevor Griffiths Rose Garden	Heritage Buildings
The Raptor Experience	Art Galleries
Timaru Botanic Gardens	Museums – vintage machinery, historic railway, classic cars and motorbikes
Coastal walking and biking tracks	Farm Tour
Caroline Bay Reserve	Regionally grown and produced food & beverage tastings



Shuttle bus stop, Information Centre, and Market.

# Discover South Canterbury

South Canterbury, New Zealand, is a region as varied and diverse as its community. From the gentle waves of Caroline Bay, to the impressive Aoraki/Mt Cook, New Zealand's highest mountain.

The picturesque rolling countryside of South Canterbury offers a breathtaking natural setting and the perfect destination for families, foodies and adventure seekers. Embark on a journey to ancient Māori rock art, outdoor thrilling adventures, and warm Kiwi hospitality. South Canterbury welcomes its visitors to experience the beauty and authenticity of this captivating region in New Zealand's South Island.



Coastal trail, Jacks Point Timaru.

## Lake Tekapo, Aoraki/Mount Cook, and the Southern Alps

Nestled amidst the captivating landscapes of South Canterbury, Lake Tekapo (1h15), Aoraki/Mount Cook (2h30), and the Southern Alps (2h) form a breathtaking ensemble. Lake Tekapo's mesmerising turquoise waters, framed by the snow-capped peaks of the Southern Alps, create a scene of unparalleled natural beauty. Nearby, the towering presence of Aoraki/Mount Cook, New Zealand's highest peak, stands, dominating with its rugged grandeur. The Southern Alps, stretching across the horizon, offer a dramatic backdrop to this picturesque tableau. Whether admiring the tranquil serenity of Lake Tekapo, marvelling at the imposing majesty of Aoraki/Mount Cook, or losing oneself in the awe-inspiring vistas of the Southern Alps, this region promises an unforgettable experience amidst nature's grandeur.



Lake Tekapo and Southern Alps.



Lake Pukaki and Mount Cook.

## Te Ana Māori Rock Art Centre

Te Ana Māori Rock Art Centre (5 min by car) is a must-do for all the art and history lovers. Step back in time and embark on a guided tour of this unique protected rock art site where you will learn the history behind these specific drawings and the movements of ancient Māori through the region. With over 400 known sites scattered across the Timaru District, don't miss the chance to explore this cultural treasure.



## Geraldine

Cruise to Geraldine (30 min by car) in a luxurious classic car and travel through traditional sheep and dairy farmland with a scenic view of the Southern Alps along the way. Tours include a leisurely stroll through Geraldine's Talbot Forest, home of native trees and the rare long tailed bat, on the way to discovering charming Geraldine village, with boutique stores housing decadent quilting fabrics, merino clothing, and artisan jewellery.



## Mesopotamia

Embark on a serene journey away from the hustle and bustle in Mesopotamia (3h by car), a picturesque sheep station nestled in the heart of the majestic New Zealand's Southern Alps, where your guide will share captivating tales of the area's rich history and farming practices. Savour a delightful home-style picnic, venture to the historic Mt Peel church and stroll through Peel Forest Park, where ancient native trees date back 1000 years.





PO Box 544  
Timaru 7940  
New Zealand  
Telephone +64 3 687 2700  
[www.primeport.co.nz](http://www.primeport.co.nz)